



ADOPT-A-BOX/ADOPT-A-BED INITIATIVE

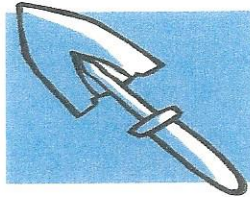
Tired of looking at unsightly utility boxes? Want to indulge your green thumb? The Tanneron Bay Board of Directors is inviting all residents to “adopt” a box. For those of you who would like to screen a utility box near your unit with plants and/or shrubs, guidelines have been developed by the Landscape Committee.

A list of acceptable plants, flowers, and shrubs has been assembled and sample plans are available. It is recommended that 75% of the plants installed be perennials. The Association will have the bed prepped by the landscapers while you provide the plants, mulch, and the old-fashioned elbow grease. It is also expected that you will maintain the bed once it has been planted, by watering and weeding. The same holds for already established beds in common areas.

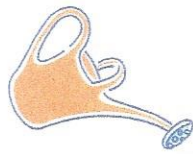
Please contact a member of the Landscape Committee if you are interested.

LANDSCAPE COMMITTEE MEMBERS

Paula Cogar (847)740-0177



Bonnie Collins (847)708-8310



Deb Giorno (847)740-4475



Ginny Klein (847)201-7073



Crete Stamer (847)508-9213



PERENNIALS

Aster
 Astilbe
 Black Eyed Susan
 Blanket Flower
 Bleeding Heart
 Columbine
 Coneflower
 Coral Bells
 Coreopsis
 Creeping Phlox
 Delphinium
 Dianthus
 Feather Reed Grass
 Ferns
 Foxglove
 Hosta
 Liatris
 Monarda
 New England Aster
 Peony
 Prairie Dropseed Grass
 Sedum
 Virginia Bluebells

SHRUBS

Azalea
 Barberris
 Blue Mist
 Boxwood
 Butterfly Bush
 Rhododendrum

BULBS

Allim
 Crocus
 Daffodil
 Hyacinth
 Iris
 Lily
 Tulip

ANNUALS

Begonia
 Caladium
 Coleus
 Cosmos
 Geranium
 Impatiens
 Marigold
 Moss Rose
 Petunia
 Snap Dragon
 Viola
 Zinnia

DROUGHT RESISTANT

PERENNIALS

Feather Reed Grass
 Prairie Dropseed Grass
 Sedum
 Coneflower
 Creeping Phlox
 Coreopsis
 Blanket Flower
 Black Eyed Susan
 Liatris
 New England Aster

SHRUBS

Barberris
 Blue Mist
 Butterfly Bush

ANNUALS

Zinnia
 Marigold
 Cosmos
 Moss Rose
 Geranium

SHADE TOLERANT

PERENNIALS

Bleeding Heart
 Coral Bells
 Astilbe
 Hosta
 Virginia Bluebells
 Ferns
 Columbine
 Foxglove

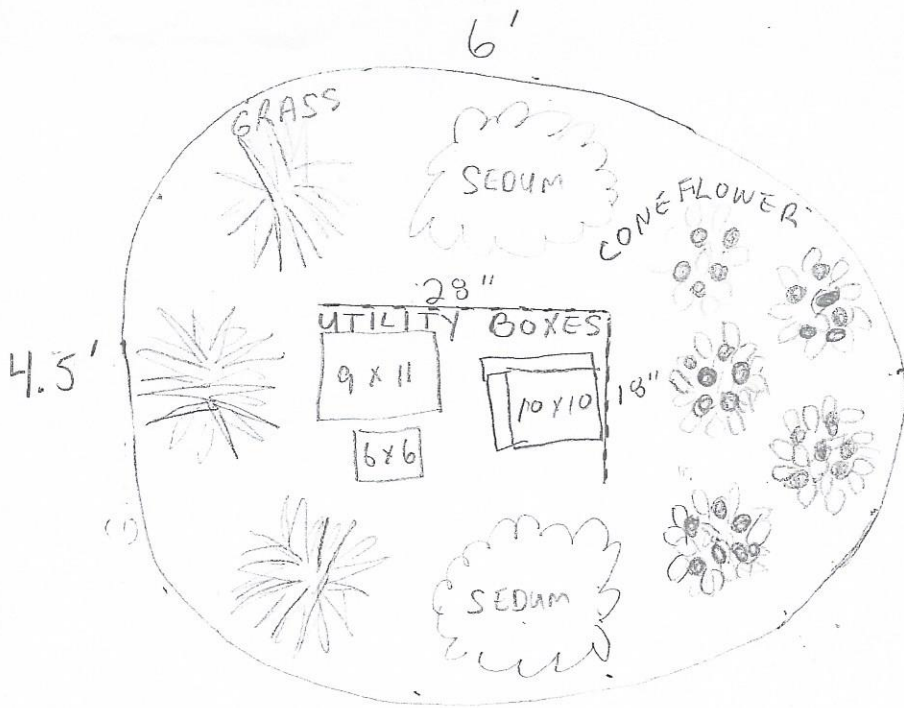
SHRUBS

Rhododendrum
 Boxwood
 Azalea

ANNUALS

Begonia
 Impatiens
 Caladium
 Coleus
 Viola

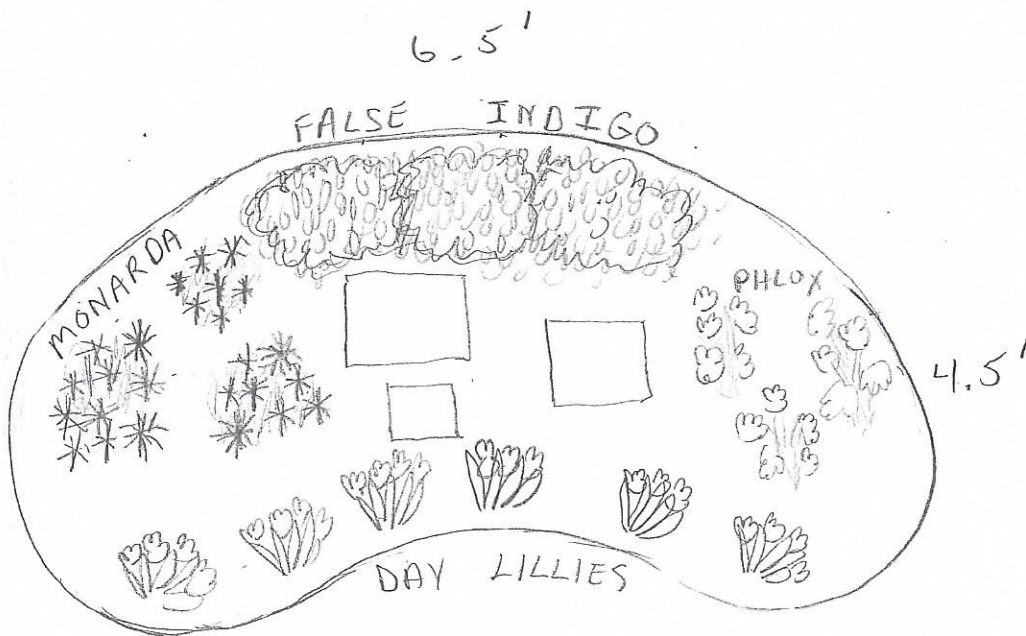
TOLERATES DRY CONDITIONS



FEATHER REED GRASS 3'
• flowers June-July
• sun; light shade

SEDUM "AUTUMN FIRE" 2'
• full sun
• fall flowering

PURPLE CONEFLOWER 2'-3'
• sun, partial sun
• blooms mid-summer



FALSE INDIGO 3'
• May-June bloom
• full sun, partial sun

MONARDA 2'-4'
• June-August bloom
• full sun, partial sun

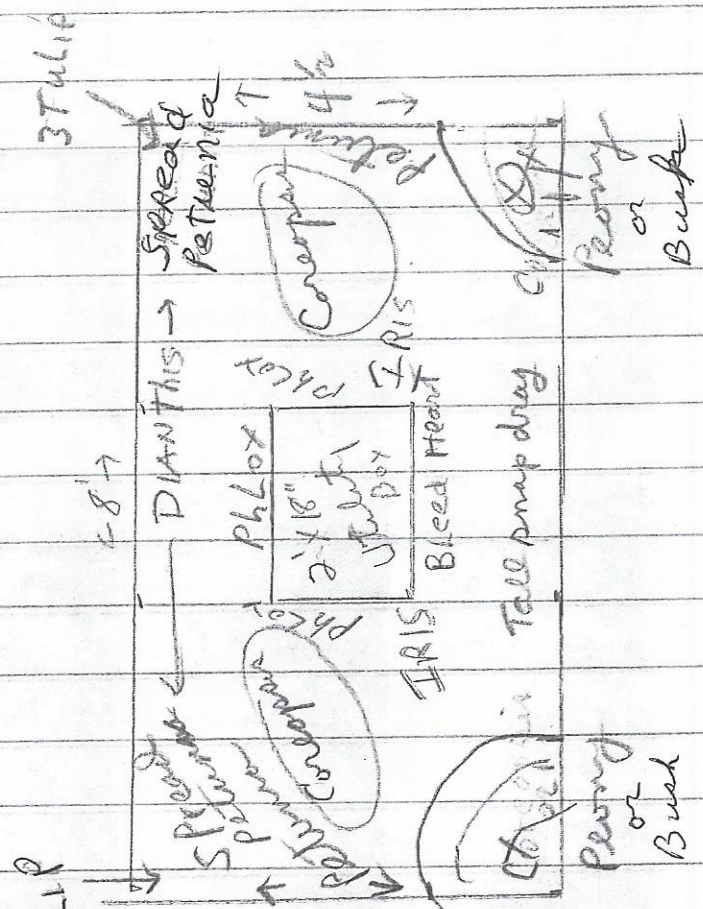
PHLOX 2'-3'
• mid-summer bloom
• full sun, partial sun

DAY LILY, "STELLA D'ORO"
• summer blooms
• full sun, light shade

1/2" = 1'

SIGHT LINE ↓

- 6 Tulip
- 2 Dianthus
- 2 spreading Petunia
- 2 Coreopsis
- Phlox
- Iris
- Bleeding heart
- 3 Tulip
- 2 Peony
- Tall snap dragon
- Petunia
- Crocus



Tall plants because of hill slope

MIP size

- Japanese spurge
- Columbine
- Day lily
- Coreopsis
- snop dragon (self seeding)
- bee balm
- 1" = 1 ft.

Tall

- delphinium
- phlox
- iris
- Bleeding heart
- Cone flower
- asters

Border

- Tulips
- daffodil
- deanthea
- spreading petunia

Bush

- Mugo pine
- Box wood
- greenstem forsythia (16" slow gr.)
- euonymus
- dwarf burning bush
- patentula

8 ft

4 1/2 ft

